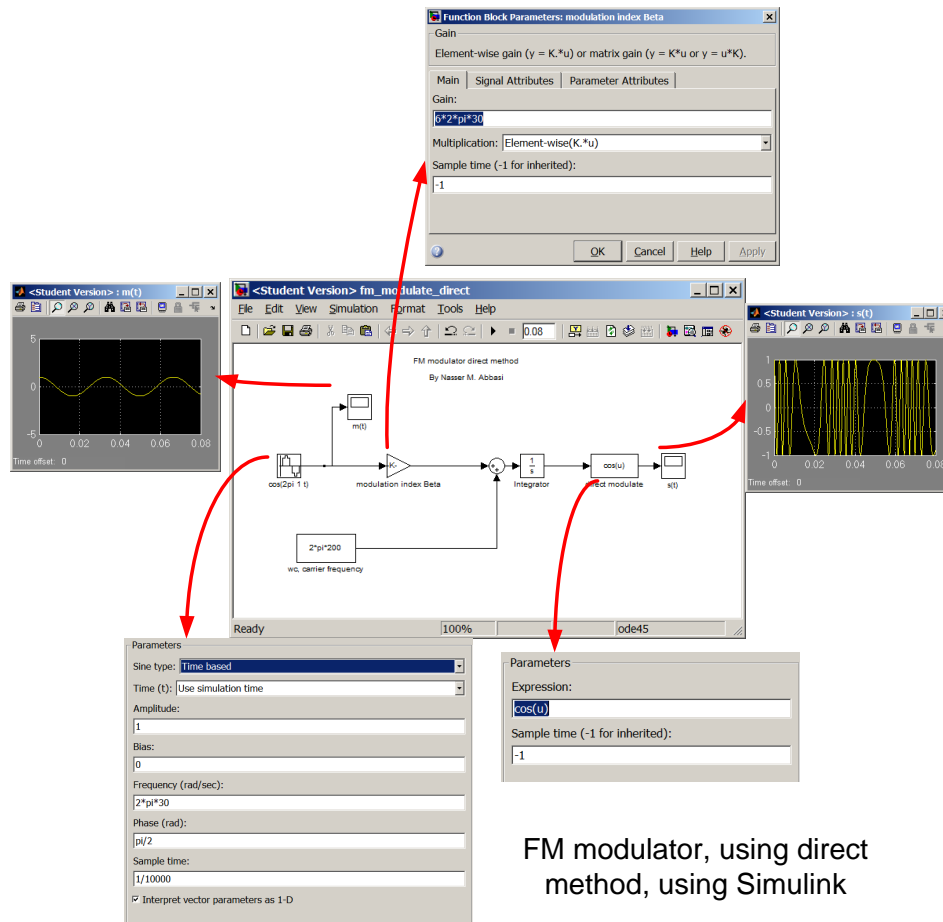


# FM modulation using Simulink

Nasser M. Abbasi

July 17, 2010 page compiled on June 29, 2015 at 4:35pm

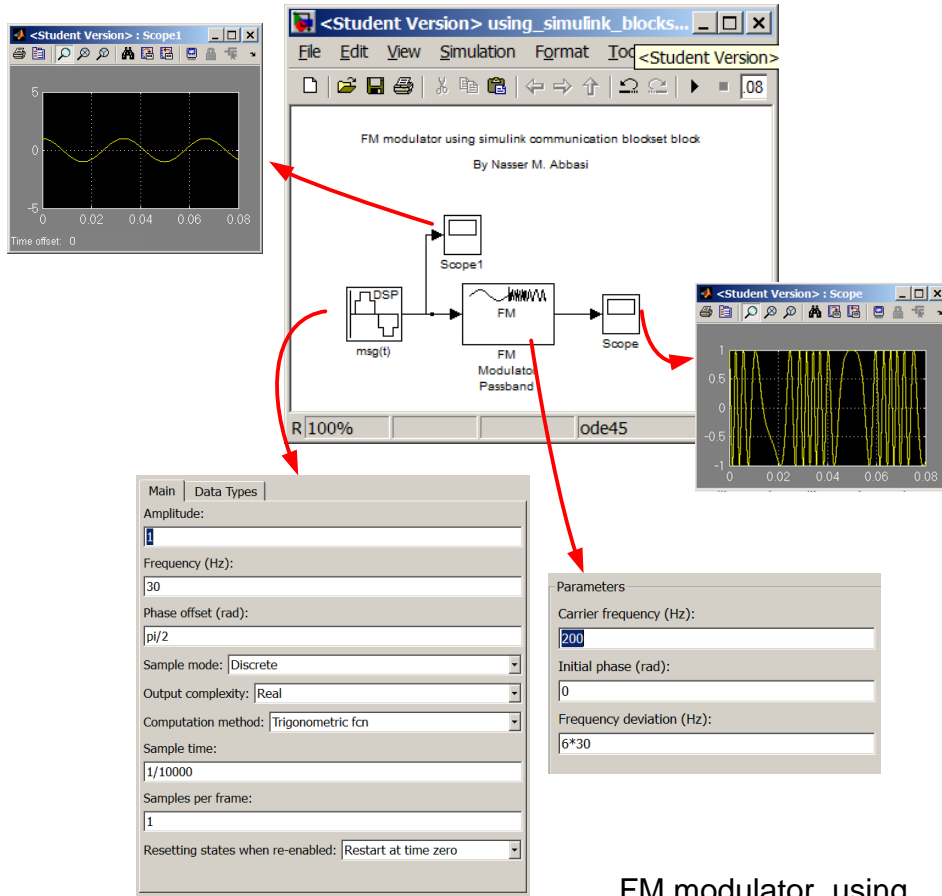
This model shows how to set up simulink to do FM modulation of a single tone signal by direct method



FM modulator, using direct method, using Simulink

The MDL file is `fm_modulate_direct.mdl`

The following model shows how to set up simulink to do FM modulation of a single tone signal using simulink FM modulation block which is part of the communication blockset



FM modulator, using Simulink blockset

The MDL file is using\_simulink\_blockset.mdl  
The above was done using Matlab 2010a